



Integrated Health Homes for Medicaid Members with a Serious & Persistent Mental Illness

Marni Bussell

April 9, 2013



Topics

1. Section 2703 Review
2. Update of Chronic Condition Health Home
3. DHS Activities for the IHH Health Home
4. Health Home Summary and FAQ



Authority: ACA Section 2703

- Option to submit State Plan Amendment (SPA)
- Targeting chronic conditions:
 - Chronic Condition Health Home:
 - Primary Care Focus
 - **Effective July 1, 2012**
 - Integrated Health Home: (Members with SMI/SED)
 - Behavioral Health Focus
- Draw 90/10 Federal match for 8 Qrts for Health Home Services



“Chronic Condition”

Health Home Statistics for Providers

23 Health Home Entities Enrolled:

- 22 counties
- 56 different clinic locations
- 566 individual practitioners

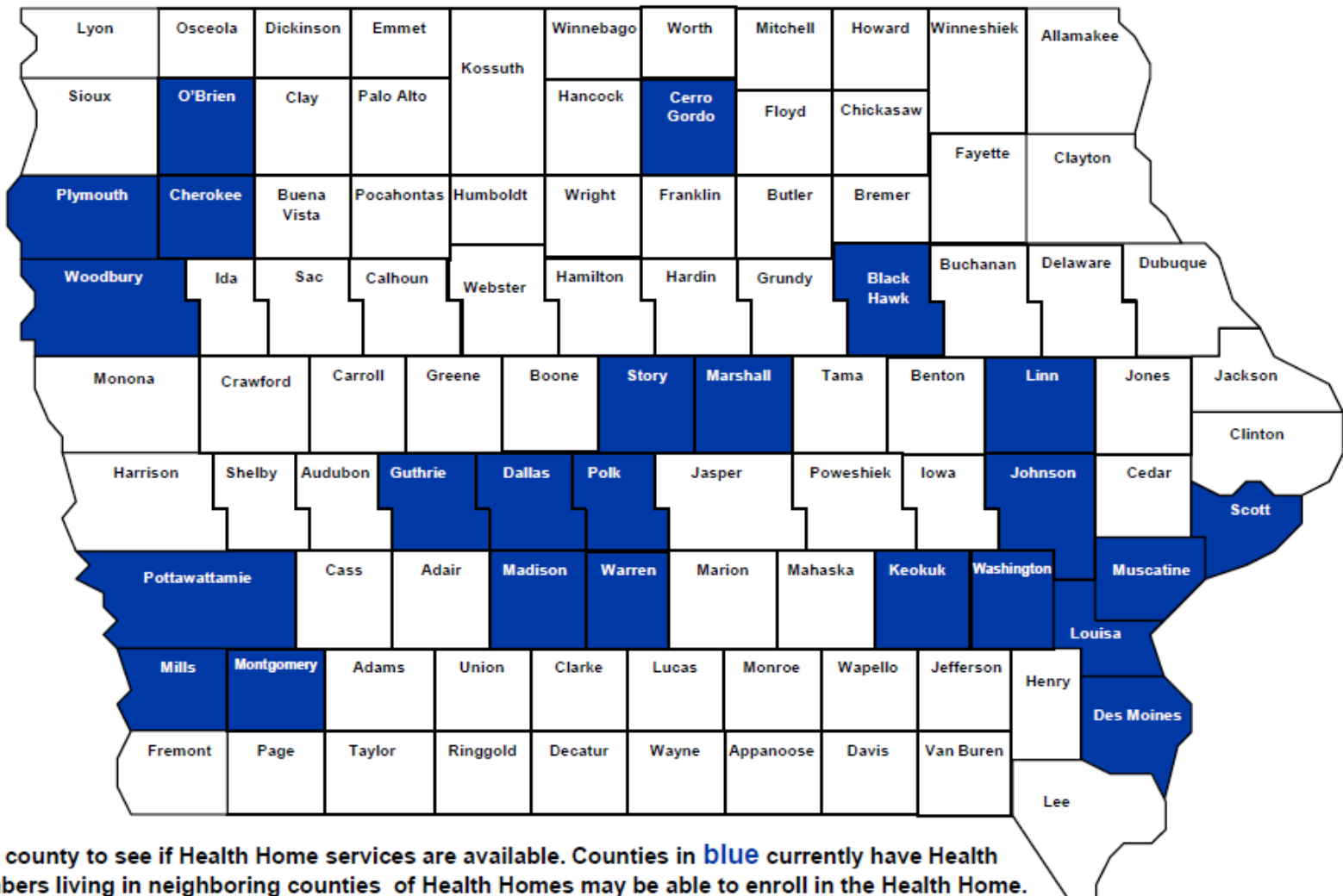
IME Support of new network:

- Two Implementation TA meetings (1:1)
- Collaborative Learning Network (Monthly)



Iowa Department of Human Services

Iowa Medicaid Health Homes: March 2013



Click on your county to see if Health Home services are available. Counties in blue currently have Health Homes. Members living in neighboring counties of Health Homes may be able to enroll in the Health Home.



“Chronic Conditions”

Health Home Statistics for Members

- Member consents to enroll by the PCP
- As of March 1st:
 - **2,500** members assigned (to 13 HH entities)
 - 45% Tier 1
 - 40% Tier 2
 - 13% Tier 3
 - 2% Tier 4
 - Just under half are Duals



In progress for the CC Health Home

- Recent clarification from CMS on how community care coordination exists within a health home model
- Coordinating community and social services is **brand new** for Primary Care providers
- Much work is needed in this area



Definition of an “Integrated Health Home”

A team of professionals working together to provide whole-person, patient-centered, coordinated care for all situations in life and transitions of care to adults with SMI and children with SED.



Definition of Serious Mental Illness (SMI)

- Psychotic Disorders,
- Schizophrenia,
- Schizoaffective disorder,
- Major Depression,
- Bipolar Disorder,
- Delusional Disorder,
- Obsessive-Compulsive Disorder.

Consideration also given for members with a Global Assessment Functioning (GAF) score of 50 or less



Definition of Serious Emotional Disturbance (SED)

A diagnosable mental, behavioral or emotional disorder of sufficient duration to meet diagnostic criteria specified within the most current Diagnostic and Statistical Manual of mental disorders (DSM) published by the American Psychiatric Association or its most recent International Classification of Diseases (ICD) equivalent that result in functional impairment.

SED may co-occur with substance use disorders, learning disorders, or intellectual disorders that may be a focus of clinical attention.



DHS Activities for the IHH



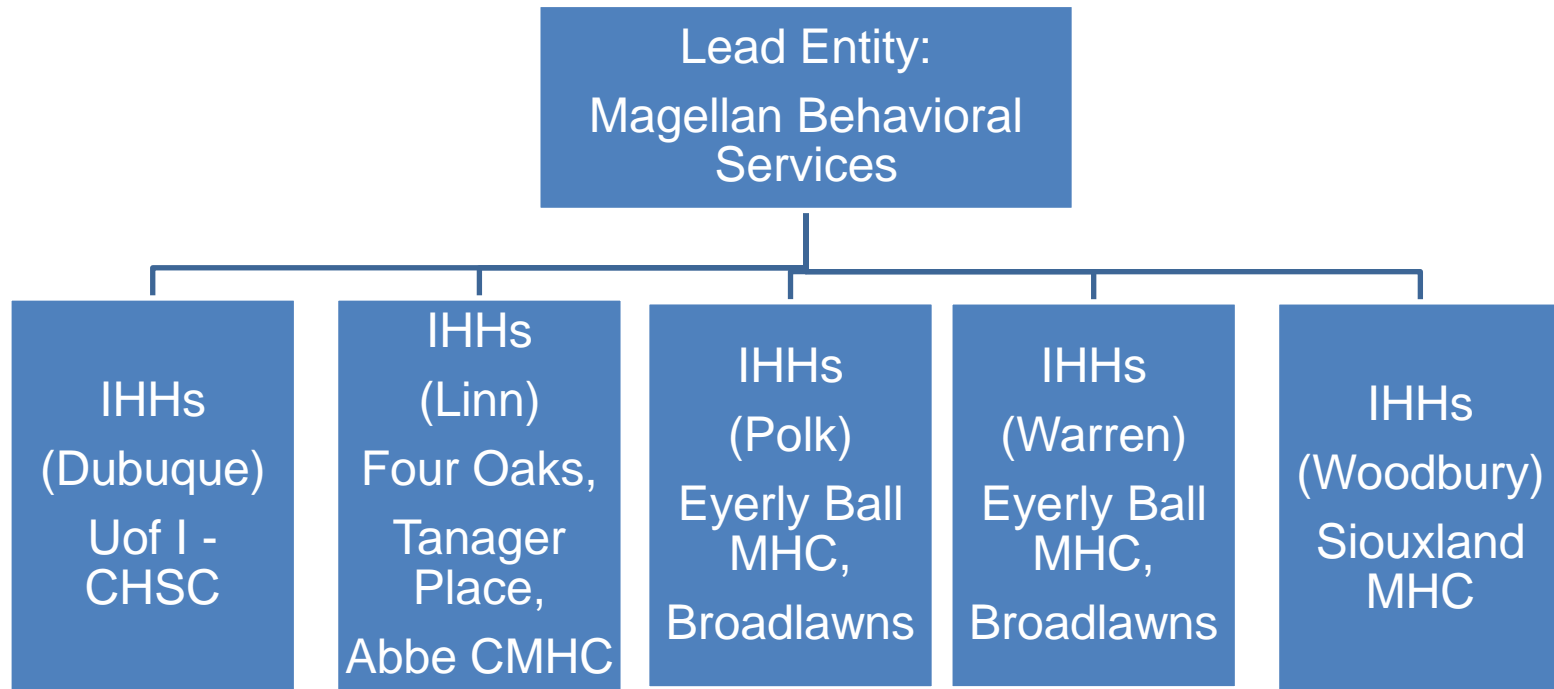


Why phase-in the IHH implementation?

- CMS allows the State to claim the 90/10 FMAP for each geographical phase
- Maximize the incentive, more effective implementation
- Build off current pilots existing in the first five counties
 - IHH for Adults with SMI
 - System of Care for Kids with SED



Team of Healthcare Professionals: IHH Phase One





Team of Healthcare Professionals

(partnership between the Lead Entity & IHH Offices)

- Physicians
- Nurse Care Coordinators
- Social Workers
- Behavioral Health Professionals
- Peer Support/Family Support Specialist

**Team is engaged with Primary Care clinics,
Specialist clinics, hospitals, etc...**



Health Home Services

A PMPM shared within the Team of healthcare Professionals for:

- Comprehensive Care Management
- Care Coordination
- Health Promotion
- Comprehensive Transitional Care
- Individual and Family Support Services
- Referral to Community and Social Support Services



Specialized Attention

IHHs required to be:

- Trained in managing SED/SMI population
 - Follow a System of Care approach for children
- Participate in practice transformation classes;
- Provide trained peer/family support specialist
- Coordinate all community and social needs



Implementation of the IHH

- IHHs phased in throughout 2013 and 2014
- IHHs fully responsible for all care coordination,
 - may contract with other entities
 - Goal: provide better overall member health outcomes
- A transition period will be established for individuals assigned to an IHH that currently receive the Medicaid service “Targeted Case Management” to safely transfer the TCM responsibilities to the IHH
 - 6 months
 - Transition administered through Magellan, and overseen by DHS



Summary Paper and FAQ

INTEGRATED HEALTH HOME FOR INDIVIDUALS WITH A SERIOUS AND PERSISTENT MENTAL ILLNESS

An Integrated Health Home (IHH) is a team of professionals working together to provide whole-person, patient-centered, coordinated care for all situations in life and transitions of care to adults with a serious and persistent mental illness (SPMI) and children with a serious emotional disturbance (SED).

An IHH is responsible for:

- Building alliances with various professionals that provide supports and services to the individual and family
- Providing individuals and families with services and supports they need, and maintain a balance with what the system can provide
- Providing different levels of care coordination that meet the different levels of need for the individuals and families
- Involve multiple agencies and other partners to provide needed services and supports
- Blending the medical model of service delivery with a person-centered support model of services

System of Care

Children with an SED and their families will receive IHH using the principles and practices of a System of Care.

Elements of Care Coordination

- *Individualized comprehensive assessments*
- *Joint treatment staffing with multidisciplinary team and supports*
- *Integration of behavioral health, primary care, specialty care, and social needs into one care delivery system*
- *Tracking and supporting individuals in obtaining needed service*
- *Comprehensive transitional services from in-patient and other settings*
- *Ensuring all services are meeting the individual's need*
- *Keeping open communication with the individual and family*
- *Peer and family support services*

Integrated Health Home for Individuals with a Severe and Persistent Mental Illness FREQUENTLY ASKED QUESTIONS

What is an Integrated Health Home?

An Integrated Health Home is a team of professionals working together to provide whole-person, patient-centered, coordinated care for adults with a serious and persistent mental illness (SPMI) and children with a serious emotional disturbance (SED). Care coordination is provided for all aspects of the individual's life and for transitions of care the individual experiences.

Who will be served by the integrated Health Home for individuals with a severe and persistent mental illness?

The Integrated Health Home will serve adults who meet the criteria for an SPMI and children who meet the criteria for an SED. This includes individuals currently receiving Targeted Case Management and Case Management through Medicaid funded Habilitation. It will also include many more individuals who are not now receiving any care coordination.

How many people are expected to enroll in health home?

Starting July 1, 2013 adults with an SPMI and children with an SED will be enrolled in an Integrated Health Home in five Iowa counties (Dubuque, Polk, Lin, Warren, and Woodbury). The remaining Iowa counties will be phased in over the next 12 to 18 months. Projected Integrated Health Home enrollment for individuals with an SPMI or an SED based on claims analysis and provider network capacity in each area:

Phase	Estimated Date	SPMI	SED	Total
Phase 1	July 2013	3,489	3,352	6,841
Phase 2	January 2014	5,736	3,376	9,112
Phase 3	July 2014	<u>5,028</u>	<u>3,154</u>	<u>8,182</u>
Total		14,254	9,881	24,135



Questions?

Contact

Medicaid Health Home Program

Marni Bussell, Project Manager

mbussel@dhs.state.ia.us

515-256-4659

<http://www.ime.state.ia.us/Providers/healthhome.html>