



Governor's Public Budget Hearing

December 08, 2014



Vision

The Iowa Department of Human Services makes a positive difference in the lives of Iowans we serve.

Mission

The Iowa Department of Human Services helps Iowans achieve healthy, safe, stable and self-sufficient lives through the programs and services we provide.

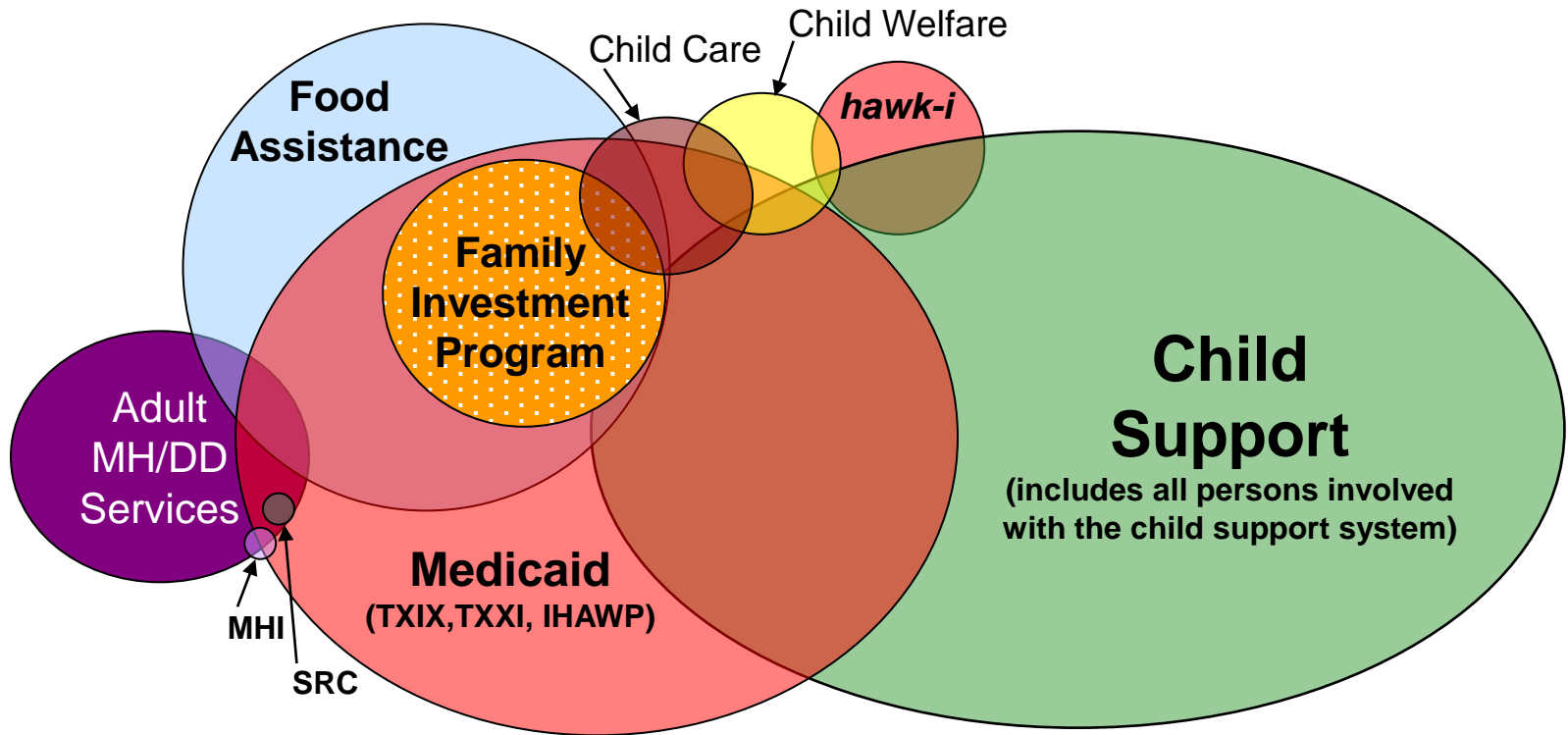
Strategic Goals

- 2011 to 2014 goals were centered on supporting one or more of the Governor's goals and initiatives.
- The DHS 2015 to 2017 plan continues to build on these goals



Total DHS Clients Served

(973,223 unduplicated)



Data as of June 2014: This report shows lowans served by DHS in a single month. Some individuals may be included in more than one program.

Report Generated – August 15, 2014

Iowa Population in 2010 Census
3,046,355
% of Population Served
32%

Where Does the Money Go?

Manage Resources & Service Delivery \$0.03

Employment & Economic Security \$0.05

Safety, Well-Being, & Permanency for Children \$0.04

Behavioral & Disabilities Health Programs \$0.03

Health Programs \$0.85



**Healthiest
State**

**Goal 1:
Improve lowans'
Health Status**



Health Care Redesign

- Access expanded
- Improved integration of care
- Focus on individual responsibility for health status



Access to Health Care Coverage

- More than 541,000 Iowans had access to health coverage through Medicaid and the Iowa Health and Wellness Plan at the end of SFY14
- Nearly 59,900 children in Iowa had access to health coverage through CHIP and *hawk-i* at the end of SFY14



Iowa Leads in Preventive Care for Kids

- Iowa is 1 of only 2 states meeting federal standards for low-income children getting free preventive exams and screenings guaranteed by Medicaid

Iowa 1st in Health Care in KIDS COUNT Report

- Iowa ranked 1st in health of children in the annual KIDS COUNT report issued by the Annie E. Casey Foundation



Individual Responsibility for Health

- 19,000 Iowa Health and Wellness Plan members have completed Health Risk Assessments
- 23,187 members have completed wellness exams



Iowa Health and Wellness Plan Dental Wellness

- Launched May 1, 2014
- Has served more than 26,600 low-income Iowans
- 41% completed risk assessments which can help identify potential issues before they become problems, and allow for less costly, preventive treatments
- Good oral health can contribute to better overall health and lower system costs



Iowa Health and Wellness Plan Benefits

Iowa's Hospitals

- The Iowa Hospital Association reports a 46% drop in uninsured patients hospitalized from January through June of 2014 compared to the same period in 2013
- The cost of charity care costs fell 18.5% or \$32.5 million
- Hospital admissions in Iowa dropped 4.4% during the time period
- Emergency room visits held steady during the time period, increasing less than 1%

**Healthiest
State**

**Goal 2:
Promote lowans'
Behavioral
Health Status**



Mental Health and Disability Redesign

- 15 regions went into effect in July 2014
- Locally-delivered and regionally-administered mental health and disability services with statewide standards of care
- County ending balances increasing
 - SFY13 aggregate ending balance approximately \$62 million
 - SFY14 aggregate ending balance approximately \$96 million
 - Regions project SFY15 ending balance of approx. \$94 million



Integrated Health Homes

- Team-based health care delivery model provides comprehensive care for adults with serious mental illness and children with serious emotional disturbances
- 19,000 members enrolled as of December 1, 2014



Integrated Health Homes – Early Results

(3,500 members comparing 6 month period before IHH and after IHH)

- Reduced Mental Health ER visits by 16%
- Reduced Mental Inpatient Admissions by 18%
- Reduced Medical ED visits by 12%
- Reduced Medical Inpatients days by 16%
- Self-reported 7% reduction in SED kids displaying self-harm behaviors over a 3 month period
- Self-reported 13% reduction in Caregivers missing work due to SED



Independence Mental Health Institute

- On the “Top Performers” list of hospitals in The Joint Commission’s annual report “America’s Hospitals: Improving Quality and Safety” – 2nd year in a row to make the list
- Achieved cumulative performance of more than 95 percent across all performance measures submitted during 2013
- Measures are related to processes closely linked to positive patient outcomes

**Healthiest
State**

**Goal 3:
Improve Safety,
Well Being and
Permanency for
Iowa's Children**



Differential Response Implemented

- New approach for protecting children and strengthening families
- Bipartisan-supported; launched January 1, 2014
- Focuses on services and supports for families where children aren't in imminent danger
 - Traditional path for children in imminent danger



Differential Response – Early Results

- From January through June 2014 compared to period previous year:
 - About 38% of cases, or 4,571, were assigned to the family assessment pathway
 - About 1,400 families accepted voluntary services which can reduce the risk of future abuse
 - The smaller total number of cases on the child abuse assessment pathway, combined with the fact they are more serious cases, results in a 3 percent higher founded rate
 - Overall, fewer names were placed on the central abuse registry



Iowa 3rd in Child Well-being

- Iowa ranked 3rd in Child Well-being on the annual KIDS COUNT Report released by the Annie E. Casey Foundation

**New Jobs
Family Incomes**

**Goal 4:
Improve lowans'
Employment and
Economic
Security**

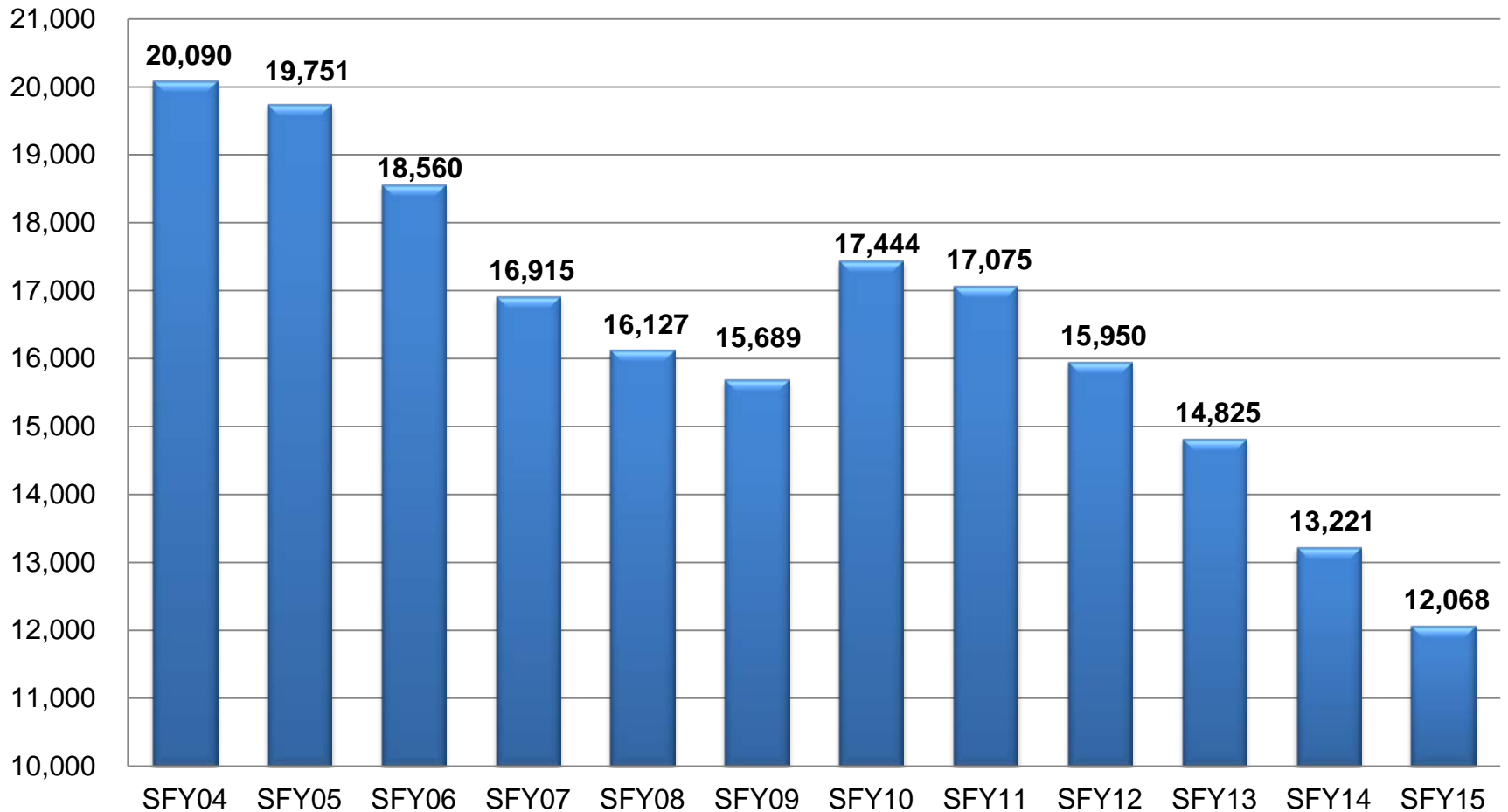


Family Investment Program (FIP)

- After years of decline, caseloads increased during the 2009-2010 recession
- Caseloads began falling again in April 2011 and have set modern-day lows
- Caseloads now appear to be leveling out

FIP monthly caseload

FIP caseload has decreased dramatically in the past four years.





Child Care Assistance

The Child Care Assistance (CCA) Program supports low-income families with working parents, parents gaining work skills, or parents going to school.

- The percentage of families qualifying for CCA due to employment has increased in each of the last three years:
 - SFY11: 90% of families received assistance due to work
 - SFY12: 92.6% of families received assistance due to work
 - SFY13: 93.8% of families received assistance due to work
 - SFY14: 94.7% of families received assistance due to work



Child Support Recovery Unit

- Iowa ranks 5th nationally in child support recovery results
- In SFY14, \$325.8 M was collected for the 177,228 cases served
 - Includes \$8.6M recovered to offset the cost of public assistance (FIP)

**Healthiest
State**

**Goal 5:
Promote choice
for Seniors and
Persons with
Disabilities**



Balancing Incentive Program

- As of March 2014, Iowa spent approximately 52% of its Medicaid Long Term Services and Supports (LTSS) funds on Community Services

Quality of Life/Quality of Care

- Iowa ranked in the top quartile in Quality of Life and Quality of Care in Long Term Services and Supports, and 13th overall in the AARP's 2014 Report Card

**Reduce
Government Costs**

**Goal 6:
Effectively
Manage
Resources**

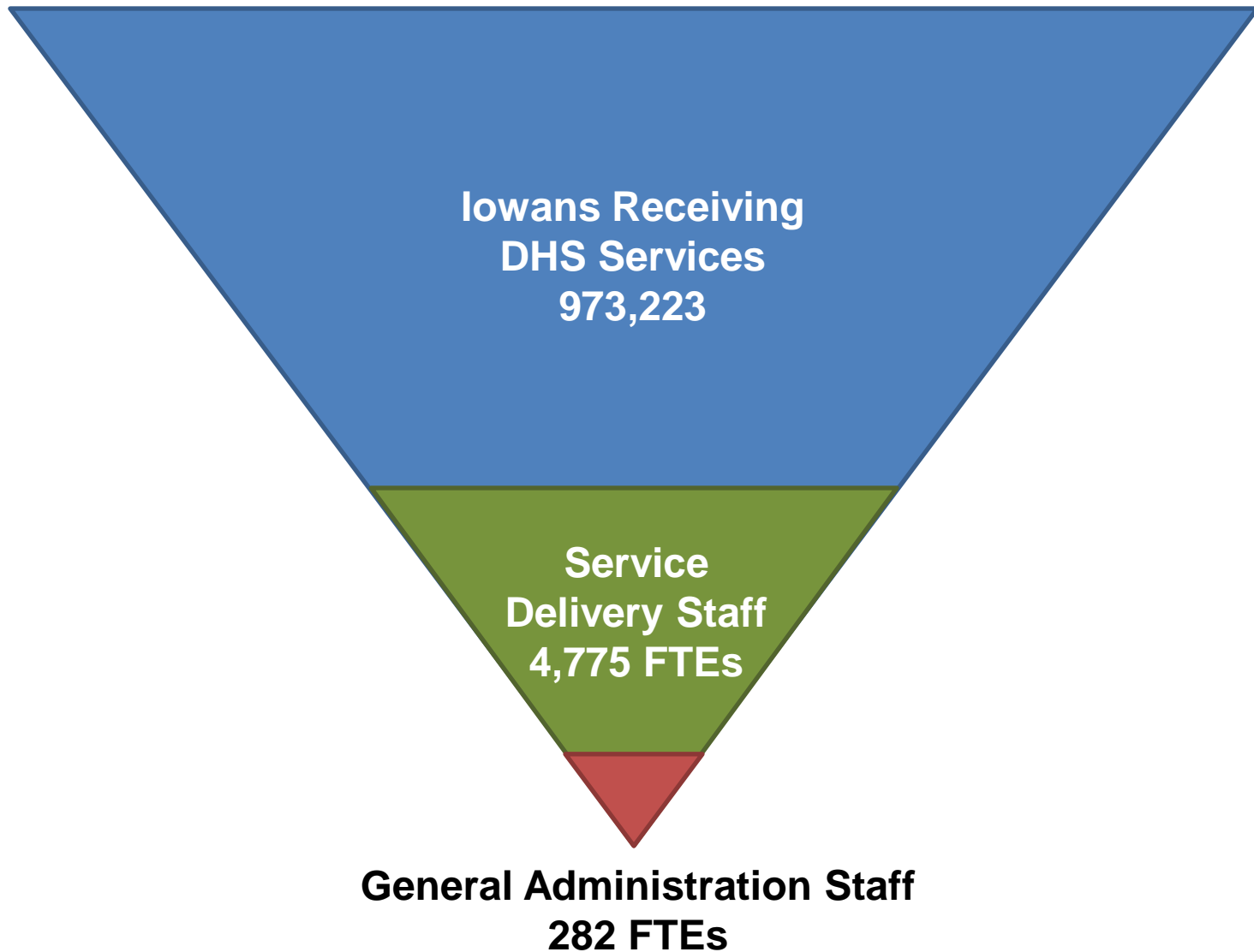


Efficiently managing delivery of services

- Less than 3 cents of each dollar in the DHS budget is spent on Field Operations
 - Provides protective, case management, eligibility determinations, and key provider support functions
- Less than 1 cent of every dollar in the DHS budget is spent on General Administration
 - Provides foundation & infrastructure for management and efficient delivery of human services programs
- In SFY14, the state cost per full-time CSRU employee was \$25,060
 - Each CSRU FTE recovers approximately \$19,544 in public assistance collections



Efficiently managing delivery of services





Iowa Medicaid

Program Integrity and Cost Management

- Medicaid's Program Integrity efforts have saved taxpayers more than \$49.5 million over the past 4 years through cost avoidance and recoveries
- The state's preferred drug list has saved the state over \$267 million in the past 4 years



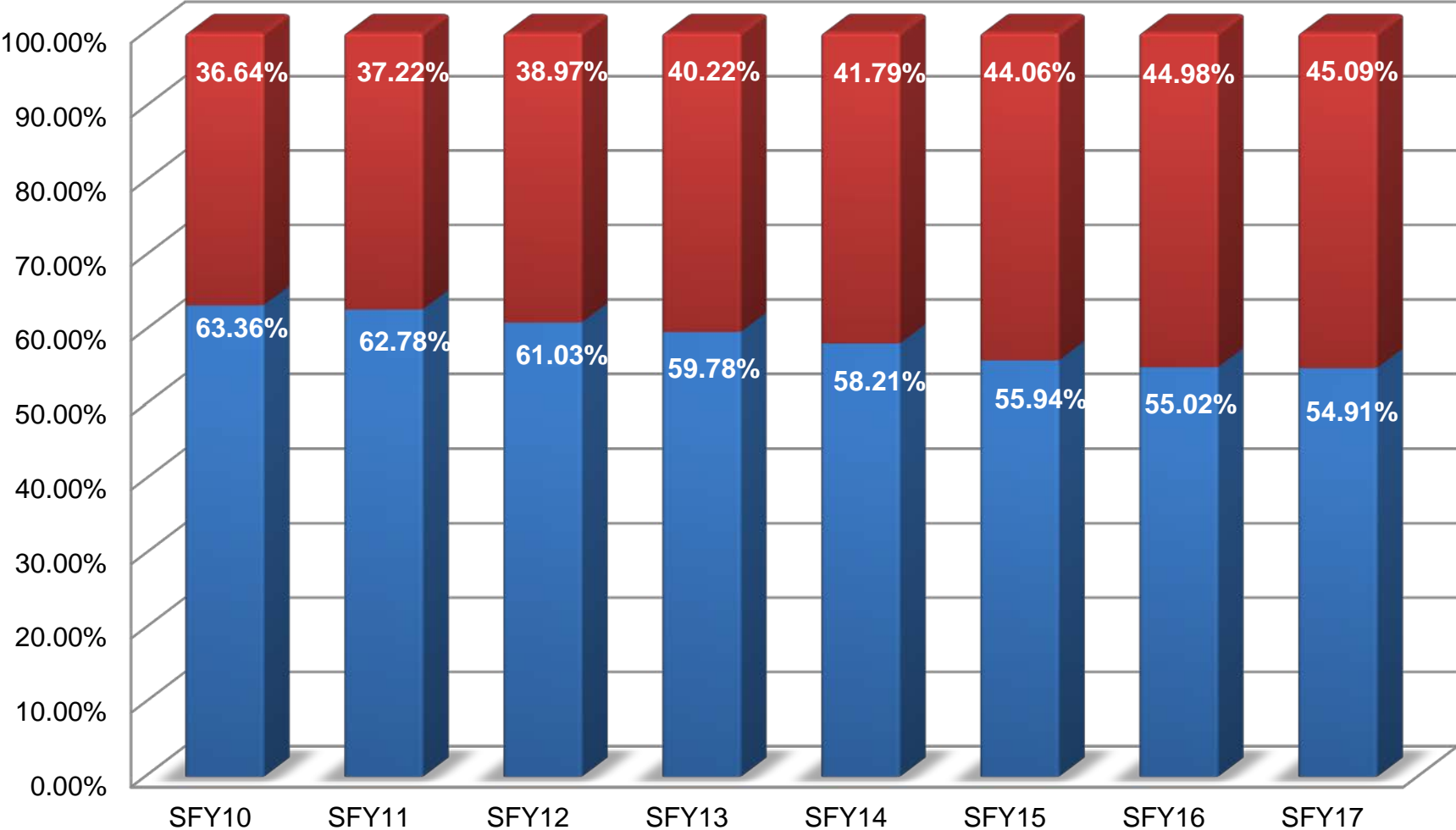
Food Assistance Program Integrity

- Ranked 3rd in the nation on selected case-related measures related to program integrity including low case and procedural error rates and timeliness of actions
- As a result, in FFY14, DHS was awarded a bonus of more than \$850,000 from the federal government

Budget Challenges

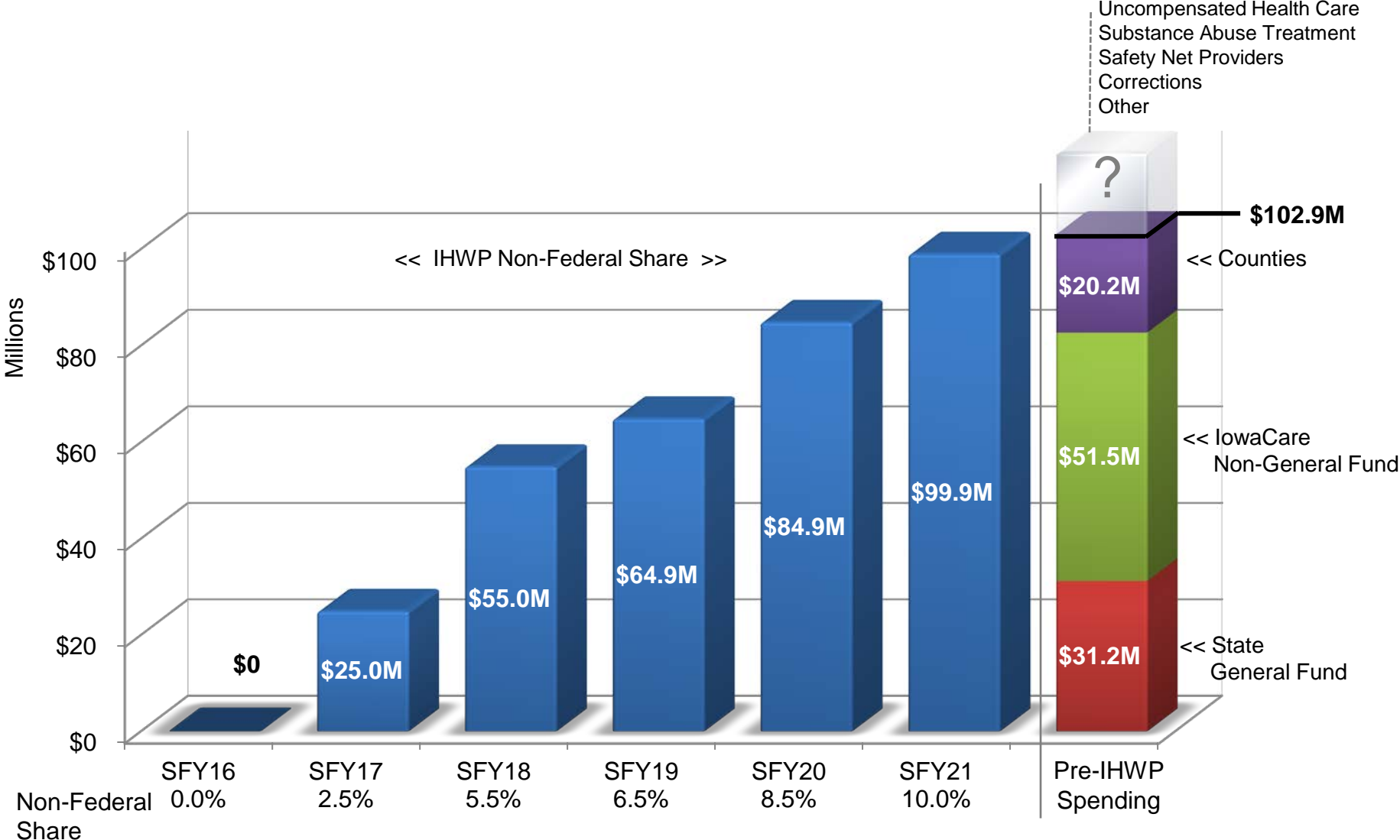
Federal Medical Assistance Percentage (FMAP)

■ FMAP ■ Non-Federal Share



Iowa Health and Wellness Plan

SFY16 – SFY21 Phase-down of enhanced FMAP





Sustaining Institutional Quality Care

- Recruitment of clinical staff
- Aging infrastructure
- Higher patient acuity levels & longer lengths of stay
- Increasing cost per bed day



Changing Federal Landscape

- Policy
- Regulation
- Funding



Sustaining Efficient & Effective Service Delivery

- Best practice
- Technology



Challenges present opportunities for future improvement.

We look forward to working with you over the next four years to continue making a positive difference in the lives of Iowans.